

# CONTENTS

## LEVEL 1

*Yeo Chee Keong, Sun Yu Li,  
Chua Boon Kee,  
Ng Yak Whee*

## LEVEL 7

*Eric Chan*

## LEVEL 9

*Lai Kui Fang, Lim Soo Ngee,  
Chang Wei*

## LEVEL 10

*Terence Teo*

# YEO CHEE KIONG

LVL 1

## Triumph



What does the sculpture look like to you?

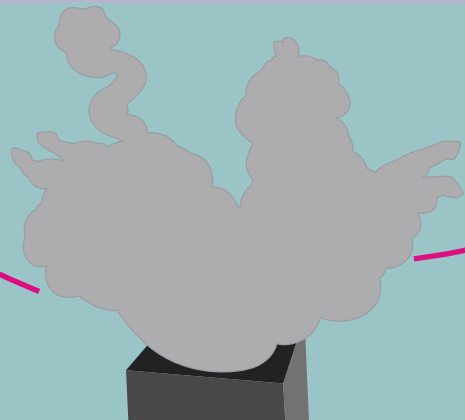
### ABOUT THE ARTWORK



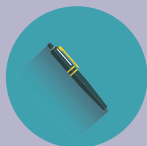
**HANDS  
ON!**

It is meant to resemble a horse. These animals are often regarded as symbols of honour, respect and endurance. In this sculpture, the artist pays tribute to these majestic animals in full splendour.

Touch the sculpture. How does it feel? What is it made out of?



# Ballet



What does the sculpture remind you of?

## ACTIVITY TIME!

Try your best to mimic the posture of this sculpture. Take turns with your friends and decide who did it best !

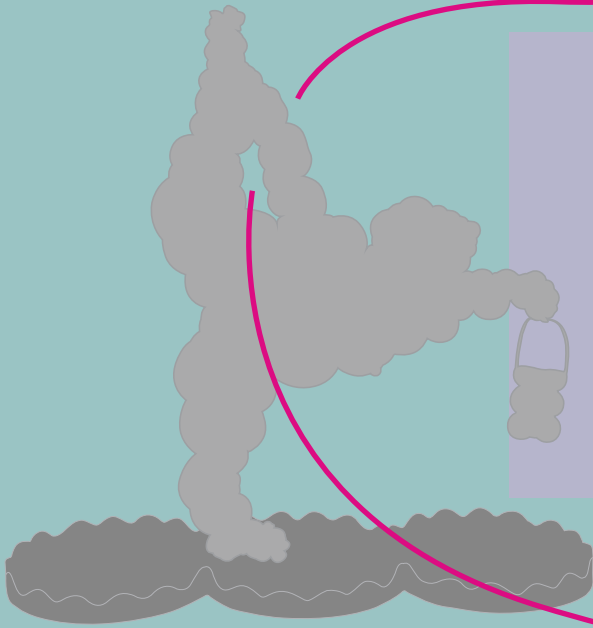
# Shopping



What do you think this figure is doing?

## ABOUT THE ARTWORK

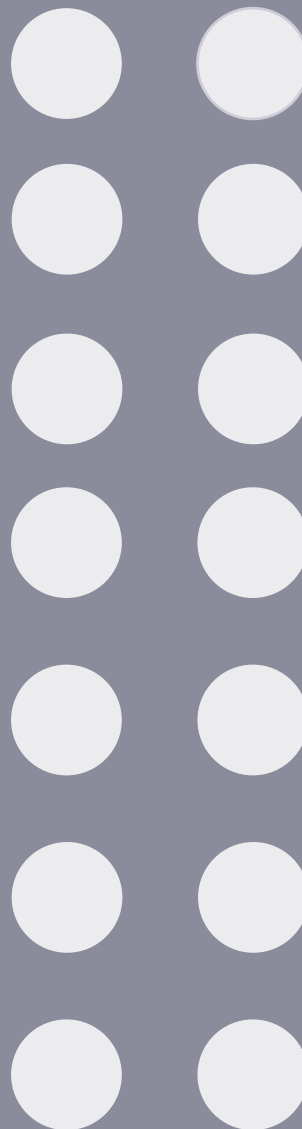
We are often attracted to shiny glossy products with perfect finishes. The artist, Yeo Chee Kiong created this 'seemingly lightweight' sculpture to poke fun at our obsession with consumerism today. "Shopping" was created in 2014 and is made of stainless steel.



# ACTIVITY TIME!

Using the circular stickers on  
the left, make whatever you  
like. It can be an action or  
an object. Have Fun!

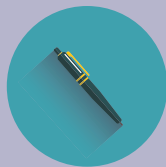
*Refer to page 28 for  
the sticker page*



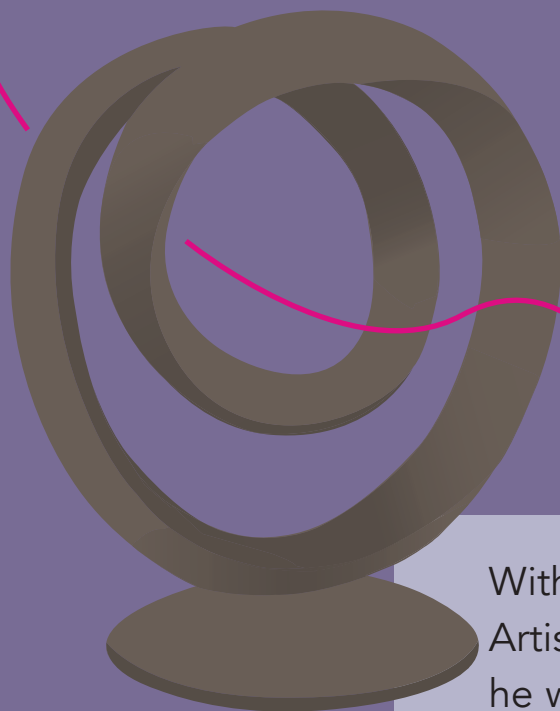
SUN YU LI

LVL 1

# Globetrotter



What words would you use to describe this sculpture?



With so much jet-setting around the world, local Artist Yu Li created this semi-abstract sculpture as he wanted to express the dynamism and constant movement of daily life.

# CHUA BOON KEE

LVL 1

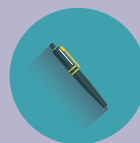
## Taichi

Trace the outline of this artwork very slowly by using your arms. How do you feel after doing this ?

**ACTIVITY  
TIME!**

### FUN FACT:

*Taichi is a form of exercise that consists of slow, rhythmic circular movements.*



Think about a type of exercise. (eg.cycling)  
How would you express this motion like how Chua expressed Taichi?

# NG YAK WHEE

LVL 1

## Song Of The Corals



What does this painting look like?

What do you think was the source of inspiration for this painting?

### ABOUT THE ARTWORK

Ng uses dynamic forms and subtly layered colours and loose brushwork to express a fantasy. He conveys the fluidity of water and musical rhythm, therefore creating an ethereal quality in his work.



# Two Trees In The Woods

## FUN FACT:

*Ng won the First Prize in the UOB Painting of the Year Competition in 1992.*

Ng often draws inspiration from nature, eg. birds, trees, and landscapes. This painting draws away from his usual abstract works. Here, Ng captures the roughness of the bark and tangle of interlocked roots.

## ABOUT THE ARTWORK



How is this different from the first painting?  
Can you see anything else in the painting other than the 2 trees?

S	R	I	Q	O	A	T	L	A	I	Y	W	P	N	K	D	H
M	E	P	H	E	N	L	O	C	A	L	F	A	F	S	R	R
O	A	E	N	V	C	J	I	E	O	P	G	I	V	S	E	U
V	T	B	Y	C	X	M	W	I	O	O	H	N	S	P	T	S
E	R	D	S	T	H	S	E	O	B	A	R	T	W	O	R	K
M	E	R	U	T	P	L	U	C	S	G	B	I	E	N	C	O
E	N	S	Y	K	R	O	O	N	E	U	I	N	R	T	C	L
N	O	H	I	L	U	A	D	T	P	I	N	G	L	A	I	P
T	R	M	O	D	E	S	C	L	O	D	W	D	I	N	J	P
S	X	Q	W	U	B	V	V	T	W	F	K	R	E	E	T	I
O	I	K	C	K	E	H	I	A	I	O	L	S	E	O	E	D
P	T	S	G	M	D	E	N	L	N	R	Z	A	N	U	Q	M
D	J	V	A	U	F	R	J	U	A	V	U	B	J	S	P	K

## ACTIVITY TIME!

Can you find all of  
these in the word  
search above?

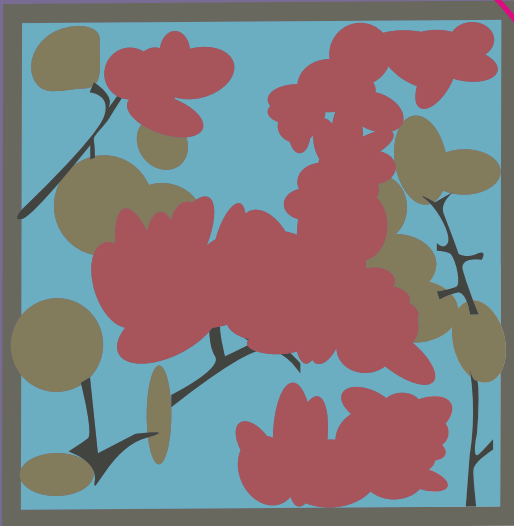
MOVEMENTS  
LOCAL  
ABSTRACT  
RHYTHMIC  
PAINTING

SPONTANEOUS  
ARTWORK  
LIVELY  
SCULPTURE

**ERIC CHAN**

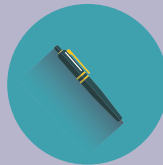
LVL 7

# *Bougainvillea In Crimson*



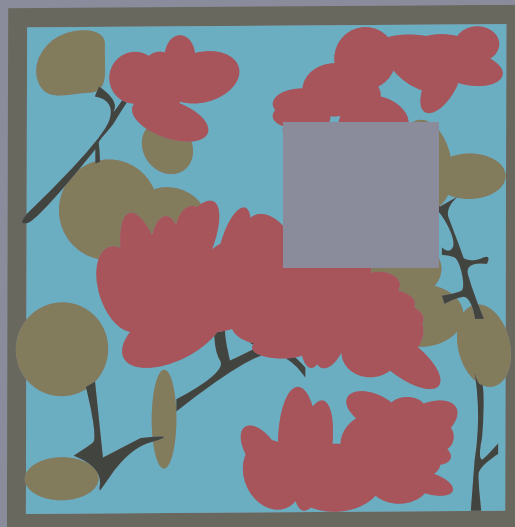
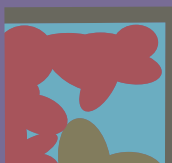
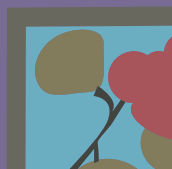
## **FUN FACT:**

*Chan's training in photography sharpened his skills in capturing fine details of the subject.*



Give some words to describe the painting. Is it clear or blurry? What made you think so?

Refer to page 28 for  
the sticker page



## ACTIVITY TIME!

Fill in the missing  
puzzle piece.  
Be sure to choose the  
correct sticker !

# LAI KUI FANG

LVL 9

## ABOUT THE ARTWORK

This painting is a depiction of a typical sight in 1980s Singapore, when it was filled with boats that piled the river for commerce and leisure. It illustrates Singapore at the cusp of its development.

# Singapore River Boat South Quay

## FUN FACT:

*This painting was created in a 'Realist' style - popular in the 18th to 19th century art.*

# ACTIVITY TIME!

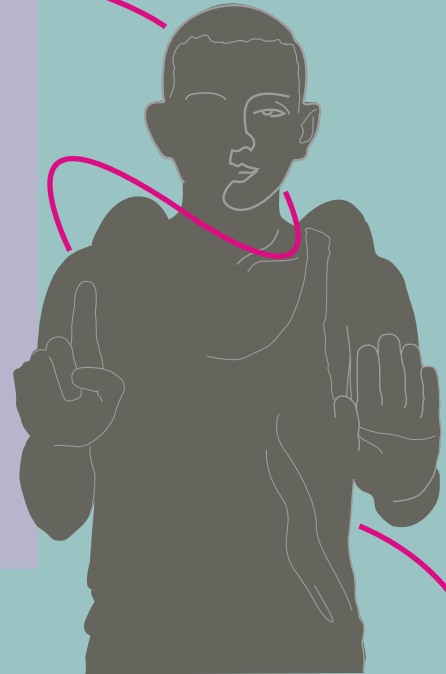
In the space below,  
draw 2 objects -  
one that represents  
'Old Singapore'  
and another  
representing  
'Singapore Today'.



## Indicator



Why do you think the figure has wings? What could be the meaning behind his hand gestures? What gesture would you use in response to this figure?



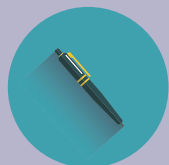
### ABOUT THE ARTWORK

Created in 2015, 'indicator' is made of bronze and measures 1.6m x 0.48m x 0.7m. Lim used a life-size winged man to remind us of humanity's intrinsic kindness through common gestures.

# CHANG WEI

LVL 9

## Merry Making



Observe the expression of the figure.  
Do you think she looks as 'merry' as the title stated?  
What do you think she is saying over the phone?

**ABOUT THE  
ARTWORK**

Technology advancements have changed the way we interact with one another. Chang created this work to highlight the impact of such devices in our lives today.



# Gaze



Look closely in the eyes of the sculpture. What kind of emotion do you think the figure is feeling? What makes you say that?



## ACTIVITY TIME!

Try to imitate the expression of the figure.  
What do you look like to others?  
In pairs, try staring at each other's eyes for about 3 minutes. How did it feel like to look at others and be looked upon constantly?  
Share this experience with your friends.

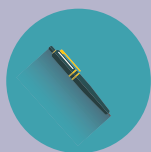
# TERENCE TEO

LVL 10

## Singular Beauty

### ABOUT THE ARTWORK

Teo's artwork is distinguished by its lively, spontaneous brushstrokes, a delicately restrained use of colour and also a finely tuned sensitivity to the qualities of ink.



What do you feel when you look at this painting?  
What makes you say that?  
What do you think the artist felt as he was creating the brushstrokes?

### FUN FACT:

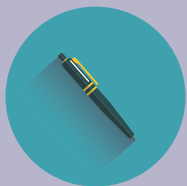
*This work forms a part of the his series, The Romance in Shangri-La, and reveals the depth of Teo's captivation with the beautiful landscape of Shangri-La.*

# ACTIVITY

## TIME!

Using whatever stationery you have at hand, create your own version of Teo's 'Singular Beauty'. Think about the emotion you'd want to evoke from your own work.

# CROSSWORD PUZZLE



Complete the crossword on the next page!  
The questions you need to answer are in  
the space below.

Down:

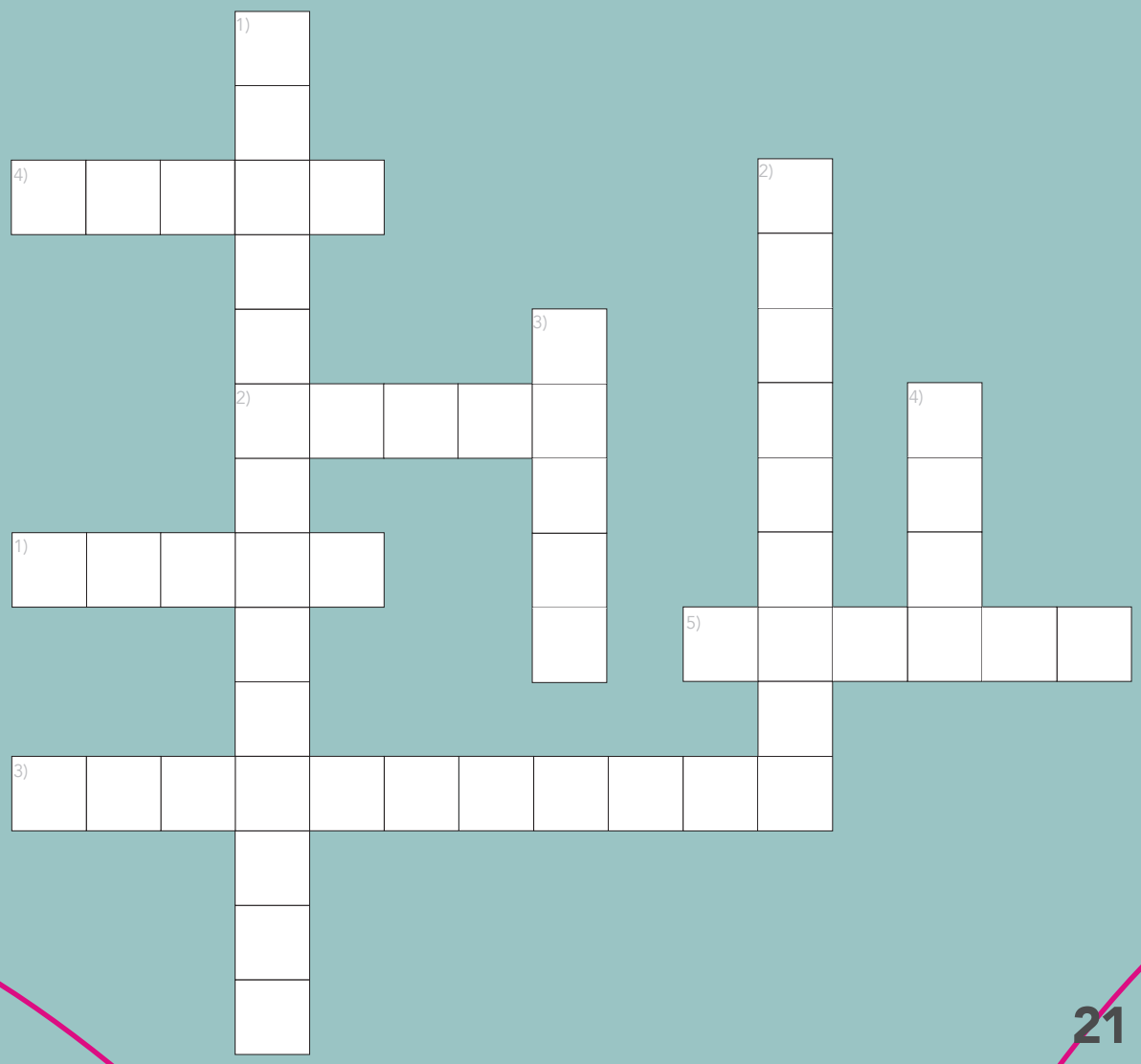
- 1) Yeo Chee Keong's works are made of \_\_\_\_\_.
- 2) 'Singapore Boat Quay' is a depiction of SG on the brink of \_\_\_\_\_.
- 3) What medium did Chang Wei use for 'Merry-Making'?
- 4) How many artworks were created in the 2000s decade?

Across:

- 1) 'Triumph' is meant to resemble a \_\_\_\_\_.
- 2) Ng Yak Whee uses \_\_\_\_\_ brushwork in his paintings to express a fantasy.
- 3) Eric Chan's skills in \_\_\_\_\_ led him to capture fine details in his work.
- 4) The works featured in this guidebook are made by \_\_\_\_\_ artists.
- 5) 'Singular Beauty' is characterised by \_\_\_\_\_ brushstrokes.

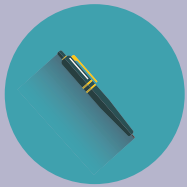
Down:  
1) stainless steel  
2) modernity  
3) resin  
4) nine

Across:  
1) horse  
2) loose  
3) photography  
4) local  
5) lively



# REFLECTION

## LOG



3 Things I Learnt Today  
2 Things I Want to Find Out  
1 Question I Have in Mind  
(About an Artist)

# INFORMATION ON SCCC

## LOCATION

1 Straits Boulevard, Singapore, 018906

## WEBSITE

<https://www.singaporeccc.org.sg/>

## CONTACT US

+(65) 6812 7222

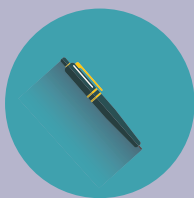
## OPENING HOURS

9am - 6pm, Monday to Friday

## CONNECT WITH US!



# FINAL RESPONSE



If you could tell a story with using your own artwork, what story would you come up with?  
What would your artwork look like?  
Make a sketch of it on the next page and do a short write-up about your story in the space below.





# STICKER PAGE